

## ONS Conceptions Statistics, England, 2014

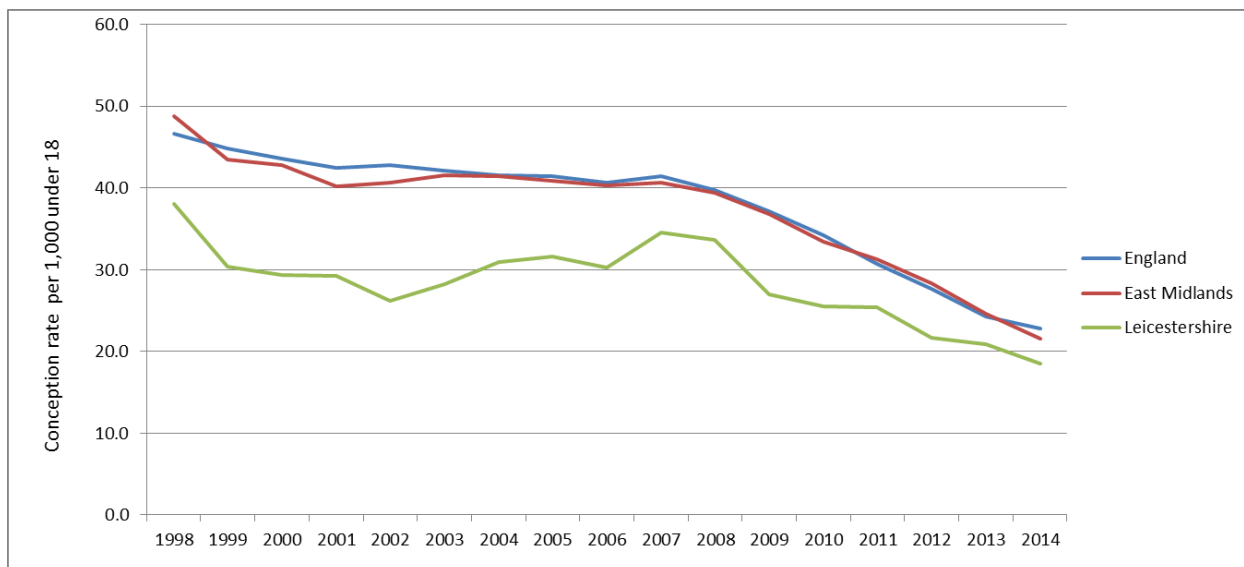
Released: 9<sup>th</sup> March 2016

### Under 18 Conceptions

#### Leicestershire

- Leicestershire's rolling annual rate has decreased to 18.5 per 1,000 15-17 aged females, significantly different to the 2013 rate of 20.9 and represents a 51.3% reduction from the 1998 (the baseline year for the Teenage Pregnancy Strategy).
- This rate remains below the East Midland's and England's annual rate at 21.6 and 22.8 per 1,000 respectively and Leicestershire is statistically significantly lower than both. England has seen a 51% reduction since 1998 and there has been a 55.7% reduction in the East Midlands in the same time period.

Figure 1: Leicestershire conception rate per 1,000 under 18 since 1998



Source: ONS Conception Statistics, England and Wales, 9 March 2015.

- The number of under 18 conceptions has decreased to 213 conceptions in 2014. This is a 10.9% decrease on counts from the previous year (239) and a 47.8% reduction from 1998 (408).
- In Leicestershire the percentage leading to abortions has decreased from 56.1% in 2013 to 53.5% in 2014. This is not statistically different when compared to the England abortion rate of 51.1% for 2014.

## Leicestershire Districts

- Compared to all Leicestershire districts, Hinckley & Bosworth has the highest under 18 conception rate at 24.9 per 1,000 and Oadby & Wigston the lowest rate at 14.0 per 1,000 (u).

Table 1: Leicestershire Districts conception rate per 1,000 women under 18

District Area	Conception rate per 1,000 women Under 18			
	2014	2013	1998	% Reduction since 1998
Blaby	18.8	25.0	35.9	47.6%
Charnwood	14.3	23.3	40.1	64.3%
Harborough	16.0	17.5	23.1	30.7%
Hinckley & Bosworth	24.9	23.2	45.4	45.2%
Melton	23.0	14.7(u)	36.4	36.8%
North West Leicestershire	21.0	20.8	43.0	51.2%
Oadby & Wigston	14.0(u)	14.8(u)	37.6	62.8%

(u) denotes low reliability due to the small number of events.

Source: ONS Conception Statistics, England and Wales, 9 March 2015.

- Three Leicestershire districts have seen increases in the conception rate from 2013 to 2014:
  - Hinckley & Bosworth increased slightly from 23.2 per 1,000 in 2013 to 24.9 per 1,000 in 2014.
  - North West Leicestershire had a small increase from 20.8 per 1,000 in 2013 to 21 per 1,000 in 2014.
  - Melton increased the most from 14.7 (u) per 1,000 in 2013 to 23 per 1,000 in 2014. The actual number of conceptions increased from 14 in 2013 to 21 in 2014, which was not statistically significant.
- The four districts: Blaby, Charnwood, Harborough and Oadby & Wigston all had a decrease in its under 18 conception rates.
  - Charnwood saw the largest improvement since 2013 in its under 18s conceptions rates in comparison to the other districts. The actual number of under 18 conceptions rates declined from 64 in 2013 to 39 in 2014. This is statistically significant and resulted in a decline in Charnwood's rate from 23.3 in 2013 to 14.3 per 1,000 in 2014.
- Details of the numbers of under 18 conceptions by districts can be found in the following table. They closely reflect the rates as outlined above. Out of all the Leicestershire districts, Hinckley & Bosworth has 45, the highest number of conceptions under 18 rate and Oadby & Wigston had 14 which was the lowest during 2014.

Table 2: Leicestershire Districts Number of under 18 conceptions

District Area	Number of Under 18 conceptions			
	2014	2013	1998	% Reduction since 1998
Blaby	32.0	43.0	51.0	37.3%
Charnwood	39.0	64.0	109.0	64.2%
Harborough	26.0	28.0	34.0	23.5%
Hinckley & Bosworth	45.0	41.0	82.0	45.1%
Melton	21.0	14.0	30.0	30.0%
North West Leicestershire	36.0	34.0	67.0	46.3%
Oadby & Wigston	14.0	15.0	35.0	60.0%

Source: ONS Conception Statistics, England and Wales, 9 March 2015.

- There has been a similar downtrend for the annual numbers for East Midlands (51.9% decrease) and England (48.2% decrease) since 1998.

### Under 16 Conceptions

#### Leicestershire

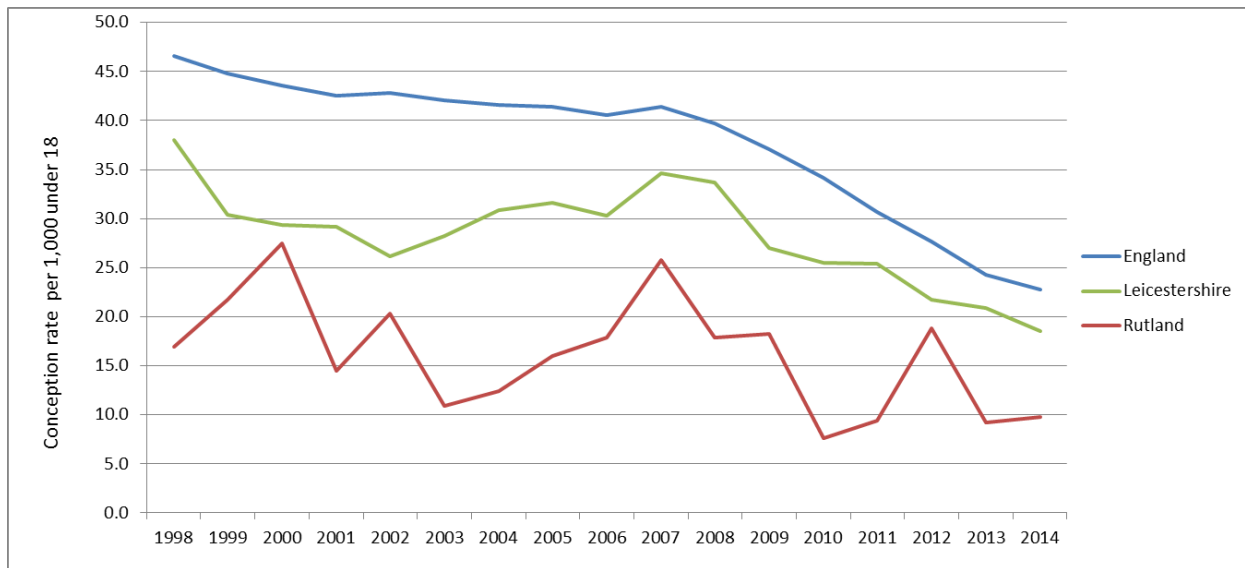
- Leicestershire's rate (13-15 aged females) has remained stable, 3.8 in 2013 to 3.9 per 1,000 in 2014.
- The number of conceptions for under 16s remains at 43 (2013 to 2014).
- The percentage of conceptions leading to abortions has decreased to 62.8% in 2014 from 65.1% in 2013. This compares against an England rate of 63%.

#### Rutland under 18 Conceptions

The small numbers of U18 conceptions (8 in 2014) mean that there is likely to be some fluctuation in rates annually which do not represent statistically significant variation.

- The rate of under 18 conceptions per 1,000 women aged 15-17 in Rutland was 9.8, this is not significantly different to the 2013 rate of 9.2 and represents a 42% reduction from the 1998. England has seen a 51% reduction since 1998 and there has been a 55.7% reduction in the East Midlands in the same time period.
- The 2014 rate of under 18 conceptions in (9.8) Rutland remains significantly better than the East Midland's and England's rate at 21.6 and 22.8 per 1,000 respectively.

Figure 2: Rutland conception rate per 1,000 under 18 since 1998



*Rutland series of data has a low reliability due to the small number of events.*

Source: ONS Conception Statistics, England and Wales, 9 March 2015.

Link to statistics:

<http://www.ons.gov.uk/peoplepopulationandcommunity/birthsdeathsandmarriages/conceptionandfertilityrates/datasets/conceptionstatisticsenglandandwalesreferencetables>